



GMT MONTHLY MEMBERSHIP PROGRESS REPORT

Results as of: 3/31/2026

Multiple District 31

LOCATION: NORTH CAROLINA

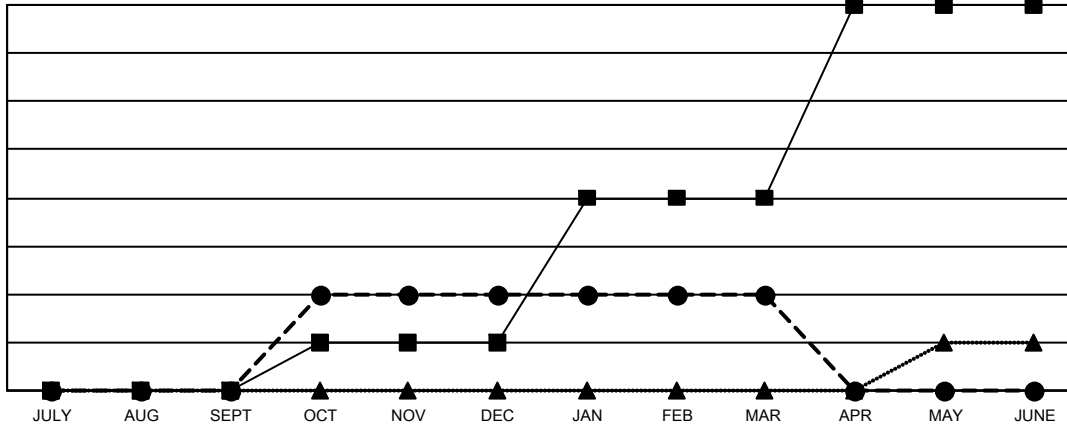
GMT: OPEN

GMT CA 1

Clubs			
RESULTS FOR 2025-2026			
QUARTER	NEW CLUB GOAL	NEW CLUBS	DROPPED CLUBS
JULY/AUG/SEPT	0	0	1
OCT/NOV/DEC	1	2	4
JAN/FEB/MAR	3	0	2
APR/MAY/JUNE	4	0	0

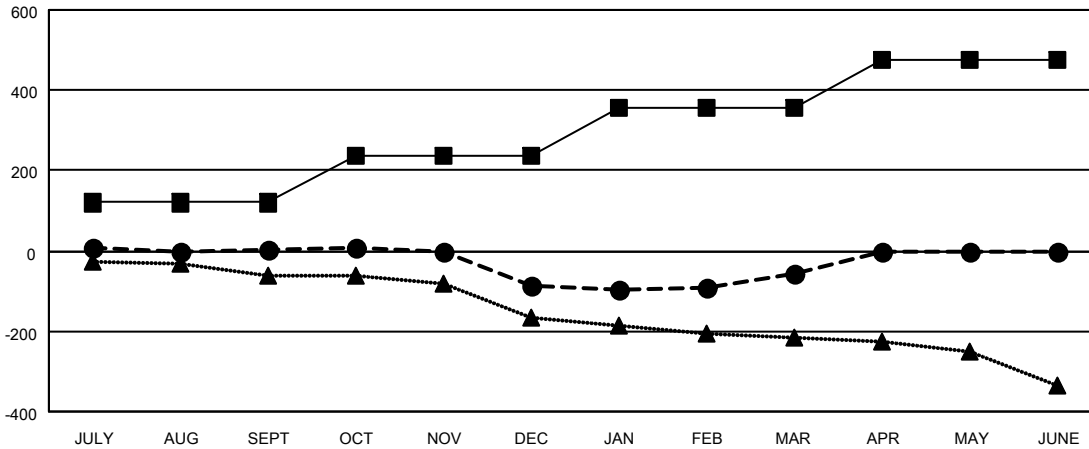
Members			
RESULTS FOR 2025-2026			
QUARTER	MEMBER GROWTH NET GOAL	MEMBER GROWTH ACTUAL	DROPPED MEMBERS ACTUAL (including transfers)
JULY/AUG/SEPT	120	139	121
OCT/NOV/DEC	116	143	213
JAN/FEB/MAR	120	163	104
APR/MAY/JUNE	121	0	0

GOALS AND ACTUAL NEW CLUBS CUMULATIVE



- - CURRENT YEAR GOALS FOR NEW CLUBS
- - CURRENT YEAR ACTUAL NEW CLUBS
- ▲ - LAST YEAR ACTUAL NEW CLUBS

GOALS AND ACTUAL MEMBERS CUMULATIVE



- - MEMBER GROWTH NET GOAL
- - MEMBER GROWTH ACTUAL
- ▲ - LAST YEAR MEMBERSHIP ACTUAL

DROPPED CLUBS: 7	
DROPPED MEMBERS	
DECEASED	52
CLUB CANCELLED	40
OTHER	345
TOTAL	437

109 CLUBS OF 234 ADDED 1 OR MORE NEW MEMBERS

GENDER DISTRIBUTION	
MALE	2,671 (63.05%)
FEMALE	1,565 (36.95%)

[CLICK HERE FOR CUMULATIVE MEMBERSHIP DATA](#)

TOTAL FAMILY UNIT MEMBERS	981
FAMILY MEMBERS PAYING HALF DUES	503